

My App Customer Portal

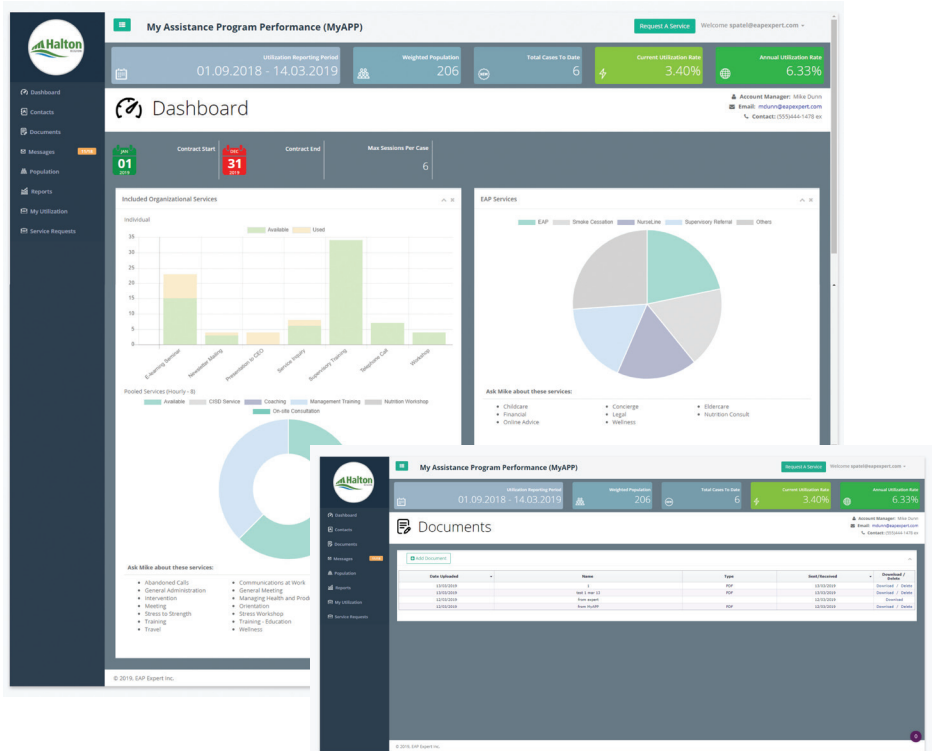


Forward Thinking  Practical Solutions

BE Engaging | BE Efficient | BE an Expert

 EAP Expert Inc.  @eapxpsoftware www.eapexpert.com

The MyAPP Customer Portal is a fully integrated solution with EAPX that enables your clients to interact with your EAP at their convenience.



The MyAPP portal provides the ability to interact with your clients, share information, request services, and update key pieces of information.

MyAPP Features

- EAP customers can view their utilization report online on demand
- EAP Customers can update their organization info online - Update key contacts - Update populations
- EAP customers can directly request new services from the portal via their EAP provider
- New updated design - visually appealing, sleek, modern
- New dashboard that provides an interactive data display and visual presentation of numbers and stats
- Data updated in near real time
- EAP customers can see their contract utilization at a glance.
- EAPs can see utilization and proactively cross sell customer son unused services.
- New Global Search – Save time by searching the entire application all at once.

The Portal provides a visual display of key metrics so that your clients can always see what is going on with their EAP services.



North American Headquarters - 7111 Syntex Dr., Mississauga, Ontario, L5N 8C3, Canada | 1.800.EAP.XPRT | T: 905.702.1380 | F: 905.702.1711 | sales@eapexpert.com